

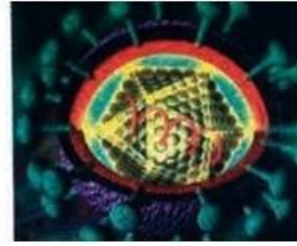
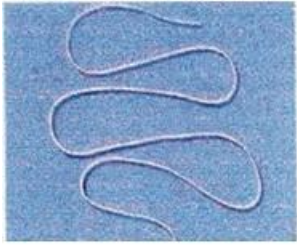
# Infectious Diseases

# ELISAS

DRG



# Infectious Diseases ELISAS



## Content

Parasites		Bacteria		Virus		Fungi	
	page		page		page		page
Ascaris lumbricoides	3	Bordetella pertussis	3	Adenovirus	3	Aspergillus fumigatus	3
Coxiella burnetii	4	Borrelia burgdorferi (Lyme)	3	Astrovirus	3	Candida albicans	4
Cryptosporidium	4	Brucella	3	Chikungunya	4		
Echinococcus	5	Chlamydia	4	Coxsackie Virus	4		
Entamoeba histolytica	5	Clostridium difficile toxin	4	Cytomegalovirus (CMV)	5		
Fasciola	5	Corynebacterium diphtheriae toxin	4	Dengue Virus	5		
Giardia lamblia	5	E.coli	5	Epstein-Barr Virus (EBV)	5		
Leishmania	7	Haemophilus influenzae	6	Hanta Virus	6		
Malaria	7	Helicobacter pylori	6	Hepatitis Virus	6		
Schistosoma mansoni	8	Legionella pneumophila	7	Herpes Simplex Virus (HSV)	6		
Strongyloides	8	Leptospira	7	Human Papilloma Virus	6		
Taenia solium	8	Mycobacterium tuberculosis	7	Influenza A and B Virus	6		
Toxocara canis	9	Mycoplasma hominis	7	Measles Virus	7		
Toxoplasma gondii	9	Mycoplasma pneumoniae	7	Mumps Virus	7		
Trichinella spiralis	9	Rickettsia conorii	8	Norovirus	7		
Trypanosoma cruzi (Chagas Disease)	9	Tetanus (Clostridium tetani) toxin	8	Parainfluenza 1/2/3 Virus	8		
		Treponema pallidum (Syphilis)	9	Parvovirus B19	8		
		Tuberculosis (TB)	9	Respiratory Syncytial Virus (RSV)	8		
		Ureaplasma urealyticum	9	Rotavirus	8		
		Yersinia enterocolitica	10	Rubella Virus	8		
				Tick-borne encephalitis (TBE, FSME) Virus	9		
				Varicella Zoster Virus	9		
				West Nile Virus	10		

# Infectious Diseases ELISAS

## Adenovirus V

Product	Cat. No.	Incubation (min.)	Testprinciple (Qualitative/Quantitative)	Standard Range	Sample Volume	Sample Dilution	Specials
<b>Adenovirus IgA ELISA</b>	EIA-3445	60/30/15	Qualitative		Serum 10 µl	1:101	
<b>Adenovirus IgG ELISA</b>	EIA-3446	60/30/15	Qualitative		Serum 10 µl	1:101	
<b>Adenovirus IgM ELISA</b>	EIA-3447	60/30/15	Qualitative		Serum 10 µl	1:101	
<b>Adenovirus Ag (stool) ELISA</b>	EIA-3444	30/5/5/5			Stool 100 µl	1:5	

## Bordetella Pertussis B

Product	Cat. No.	Incubation (min.)	Testprinciple (Qualitative/Quantitative)	Standard Range	Sample Volume	Sample Dilution	Specials
<b>Bordetella pertussis/toxin IgA ELISA</b>	EIA-3449	60/30/15	Qualitative/semiquantitative		Serum 10 µl	1:101	
<b>Bordetella pertussis/toxin IgG ELISA</b>	EIA-3450	60/30/15	Qualitative/semiquantitative		Serum 10 µl	1:101	
<b>Bordetella pertussis/toxin IgM ELISA</b>	EIA-3451	60/30/15	Qualitative/semiquantitative		Serum 10 µl	1:101	

## Ascaris lumbricoides P

Product	Cat. No.	Incubation (min.)	Testprinciple (Qualitative/Quantitative)	Standard Range	Sample Volume	Sample Dilution	Specials
<b>Ascaris lumbricoides IgG ELISA</b>	EIA-3817	60/60/15	Qualitative		Serum 10 µl	1:101	

## Borrelia burgdorferi (LYME) B

Product	Cat. No.	Incubation (min.)	Testprinciple (Qual/Quan.)	Standard Range	Sample Volume	Sample Dilution	Specials
<b>Borrelia IgG + VlsE ELISA</b>	EIA-4289	60/30/30	Qualitative/semiquantitative		Serum, CSF 10 µl	1:101	
<b>Borrelia 14 KD + OspC IgM ELISA</b>	EIA-4288	60/30/30	Qualitative/semiquantitative		Serum, CSF 10 µl	1:101	
<b>Anti-Borrelia LIA IgG</b>	EIA-5300	5/45/45/10	Qualitative		Serum 15 µl		20 tests
<b>Anti-Borrelia LIA IgM</b>	EIA-5301	5/45/45/10	Qualitative		Serum 15 µl		20 tests

(LIA IgG = Line Immuno Assay)

## Aspergillus fumigatus F

Product	Cat. No.	Incubation (min.)	Testprinciple (Qualitative/Quantitative)	Standard Range	Sample Volume	Sample Dilution	Specials
<b>Aspergillus fumigatus IgA ELISA</b>	EIA-2500	60/30/20	Quantitative	0.1-100 U/ml	Serum/Plasma 10 µl	1:101	
<b>Aspergillus fumigatus IgG ELISA</b>	EIA-2501	60/30/20	Quantitative	0.1-100 U/ml	Serum/Plasma 10 µl	1:101	
<b>Aspergillus fumigatus IgM ELISA</b>	EIA-2502	60/30/20	Quantitative	0.1-100 U/ml	Serum/Plasma 10 µl	1:101	

## Astrovirus V

Product	Cat. No.	Incubation (min.)	Testprinciple (Qualitative/Quantitative)	Standard Range	Sample Volume	Sample Dilution	Specials
<b>Astrovirus Ag (stool) ELISA</b>	EIA-4456	60/10	Qualitative		Stool 100 µl/100 mg	1:11	



## Brucella B

Product	Cat. No.	Incubation (min.)	Testprinciple (Qualitative/Quantitative)	Standard Range	Sample Volume	Sample Dilution	Specials
<b>Brucella IgA ELISA</b>	EIA-3271	60/30/20	Quantitative	1-200 U/ml	Serum/Plasma 5 µl	1:101	
<b>Brucella IgG ELISA</b>	EIA-3455	60/30/15	Qualitative/semiquantitative		Serum 10 µl	1:101	
<b>Brucella IgM ELISA</b>	EIA-3456	60/30/15	Qualitative/semiquantitative		Serum 10 µl	1:101	



# Infectious Diseases ELISAS

## Candida albicans F

Product	Cat. No.	Incubation (min.)	Testprinciple (Qualitative/Quantitative)	Standard Range	Sample Volume	Sample Dilution	Specials
<b>Candida albicans IgA ELISA</b>	EIA-3457	60/30/15	Qualitative/semiquantitative		Serum 10 µl	1:101	
<b>Candida albicans IgG ELISA</b>	EIA-3458	60/30/15	Qualitative/semiquantitative		Serum 10 µl	1:101	
<b>Candida albicans IgM ELISA</b>	EIA-3459	60/30/15	Qualitative/semiquantitative		Serum 10 µl	1:101	

## Chikungunya V

Product	Cat. No.	Incubation (min.)	Testprinciple (Qualitative/Quantitative)	Standard Range	Sample Volume	Sample Dilution	Specials
<b>Chikungunya IgG ELISA</b>	EIA-5102	60/30/30/15	Qualitative		10 µl	1:101	
<b>Chikungunya IgM ELISA</b>	EIA-5103	60/30/30/15	Qualitative		10 µl	1:101	

## Chlamydia B

Product	Cat. No.	Incubation (min.)	Testprinciple (Qualitative/Quantitative)	Standard Range	Sample Volume	Sample Dilution	Specials
<b>Chlamydia pneumoniae IgA ELISA</b>	EIA-4160	60/30/15	Qualitative		Serum 10 µl	1:101	
<b>Chlamydia pneumoniae IgG ELISA</b>	EIA-3912	60/30/15	Qualitative		Serum 10 µl	1:101	
<b>Chlamydia pneumoniae IgM ELISA</b>	EIA-3913	60/30/15	Qualitative		Serum 10 µl	1:101	

## Chlamydia B

Product	Cat. No.	Incubation (min.)	Testprinciple (Qualitative/Quantitative)	Standard Range	Sample Volume	Sample Dilution	Specials
<b>Chlamydia trachomatis AG ELISA</b>	EIA-3460	10/60/20	Qualitative		Urogenital/Ophthalmic Specimens (e.g. urine 25 ml)		Please have a look at the user's manual
<b>Chlamydia trachomatis IgA ELISA</b>	EIA-3809	60/30/15	Qualitative		Serum 10 µl	1:101	
<b>Chlamydia trachomatis IgG ELISA</b>	EIA-3810	60/30/15	Qualitative		Serum 10 µl	1:101	
<b>Chlamydia trachomatis IgM ELISA</b>	EIA-3811	60/30/15	Qualitative		Serum 10 µl	1:101	
<b>Chlamydia trachomatis IgA ELISA</b>	EIA-3461	60/30/15	Qualitative/Semiquantitative		Serum 10 µl	1:101	
<b>Chlamydia trachomatis IgG ELISA</b>	EIA-3462	60/30/15	Qualitative/Semiquantitative		Serum 10 µl	1:101	
<b>Chlamydia trachomatis IgM ELISA</b>	EIA-3463	60/30/15	Qualitative/Semiquantitative		Serum 10 µl	1:101	
<b>Chlamydia AG (Quick Vue)</b>	RAP-2592	12	Qualitative		3 drops of the extracted sample		25 Cassettes

## Clostridium difficile toxin B

Product	Cat. No.	Incubation (min.)	Testprinciple (Qualitative/Quantitative)	Standard Range	Sample Volume	Sample Dilution	Specials
<b>Clostridium Difficile Toxin A+B Ag ELISA</b>	EIA-4203	30/10/10	Qualitative		Stool 100 µl	1:4	

## Corynebacterium diptheriae toxin B

Product	Cat. No.	Incubation (min.)	Testprinciple (Qualitative/Quantitative)	Standard Range	Sample Volume	Sample Dilution	Specials
<b>Corynebacterium diptheriae toxin IgG ELISA</b>	EIA-3466	10/5/5	Quantitative	0.009-0.35 IU/ml	Serum 20 µl	1:100 1:1000	

## Coxiella burnetii P

Product	Cat. No.	Incubation (min.)	Testprinciple (Qualitative/Quantitative)	Standard Range	Sample Volume	Sample Dilution	Specials
<b>Coxiella burnetii Phase 1 IgG ELISA</b>	EIA-5188	60/30/15	Qualitative				
<b>Coxiella burnetii Phase 2 IgG ELISA</b>	EIA-5189	60/30/15	Qualitative				
<b>Coxiella burnetii Phase 1 IgM ELISA</b>	EIA-5187	60/30/15	Qualitative				

## Coxsackie Virus V

Product	Cat. No.	Incubation (min.)	Testprinciple (Qualitative/Quantitative)	Standard Range	Sample Volume	Sample Dilution	Specials
<b>Coxsackie B Virus IgM ELISA</b>	EIA-5175	60/60/20	Qualitative		10 µl	1:101	

## Cryptosporidium P

Product	Cat. No.	Incubation (min.)	Testprinciple (Qualitative/Quantitative)	Standard Range	Sample Volume	Sample Dilution	Specials
<b>Cryptosporidium Ag ELISA</b>	EIA-3467	30/5/5/5	Qualitative		Stool 1 mg	1:4	

# Infectious Diseases ELISAS

## Cytomegalovirus (CMV) V

Product	Cat. No.	Incubation (min.)	Testprinciple (Qualitative/Quantitative)	Standard Range	Sample Volume	Sample Dilution	Specials
<b>Cytomegalovirus (CMV) IgG ELISA</b>	EIA-3808	60/30/15	Qualitative		Serum 10 µl	1:101	
<b>Cytomegalovirus (CMV) IgM ELISA</b>	EIA-3823	60/30/15	Qualitative		Serum 10 µl	1:101	
<b>Cytomegalovirus (CMV) IgG ELISA</b>	EIA-3468	60/30/10	Quantitative	10-80 DU/ml	Serum 10 µl	1:101	
<b>Cytomegalovirus (CMV) IgM ELISA</b>	EIA-3469	60/30/10	Quantitative	50-400 DU/ml	Serum 10 µl	1:101	

## Dengue Virus V

Product	Cat. No.	Incubation (min.)	Testprinciple (Qualitative/Quantitative)	Standard Range	Sample Volume	Sample Dilution	Specials
<b>Dengue Virus IgG ELISA</b>	EIA-3470	60/30/15	Qualitative/Semiquantitative		Serum 10 µl	1:101	
<b>Dengue Virus IgM ELISA</b>	EIA-3471	60/30/15	Qualitative/Semiquantitative		Serum 10 µl	1:101	



## Echinococcus P

Product	Cat. No.	Incubation (min.)	Testprinciple (Qualitative/Quantitative)	Standard Range	Sample Volume	Sample Dilution	Specials
<b>Echinococcus IgG ELISA</b>	EIA-3472	60/30/10	Qualitative		Serum 10 µl	1:101	

## Entamoeba histolytica P

Product	Cat. No.	Incubation (min.)	Testprinciple (Qualitative/Quantitative)	Standard Range	Sample Volume	Sample Dilution	Specials
<b>Entamoeba histolytica IgG ELISA</b>	EIA-3474	10/5/5	Qualitative		Serum 5 µl	1:64	

## E.coli B

Product	Cat. No.	Incubation (min.)	Testprinciple (Qualitative/Quantitative)	Standard Range	Sample Volume	Sample Dilution	Specials
<b>E. coli Verotoxin (stool) Ag</b>	EIA-4204	30/30/10	Qualitative		Stool 1 g	1:4	
<b>E. coli O157 Ag (stool) ELISA</b>	EIA-4229	30/30/10	Qualitative		Stool 1 g	1:4	

## Epstein-Barr Virus (EBV) V

Product	Cat. No.	Incubation (min.)	Testprinciple (Qualitative/Quantitative)	Standard Range	Sample Volume	Sample Dilution	Specials
<b>EBV (EA) IgA ELISA</b>	EIA-2516	60/30/20	Quantitative	0-200 U/ml	Serum/Plasma 5 µl	1:101	
<b>EBV (EA) IgG ELISA</b>	EIA-2517	60/30/20	Quantitative	0-150 U/ml	Serum/Plasma 5 µl	1:101	
<b>EBV (EA) IgM ELISA</b>	EIA-2518	60/30/20	Quantitative	0-200 U/ml	Serum/Plasma 5 µl	1:101	
<b>EBV (VCA) IgA ELISA</b>	EIA-2522	60/30/20	Quantitative	0.1-150 U/ml	Serum/Plasma 10 µl	1:101	
<b>EBV (VCA) IgG ELISA</b>	EIA-3475	60/60/20	Qualitative/Semiquantitative		Serum 10 µl	1:101	
<b>EBV (VCA) IgM ELISA</b>	EIA-3476	60/60/20	Qualitative/Semiquantitative		Serum 10 µl	1:101	
<b>EBV (EBNA) IgA ELISA</b>	EIA-2519	60/30/20	Qualitative/Semiquantitative		Serum 5 µl	1:101	
<b>EBV (EBNA) IgG ELISA</b>	EIA-4246	60/60/20	Qualitative/Semiquantitative		Serum 10 µl	1:101	
<b>EBV (EBNA) IgM ELISA</b>	EIA-4247	60/60/20	Qualitative/Semiquantitative		Serum 10 µl	1:101	

## Fasciola P

Product	Cat. No.	Incubation (min.)	Testprinciple (Qualitative/Quantitative)	Standard Range	Sample Volume	Sample Dilution	Specials
<b>Fasciola IgG ELISA</b>	EIA-4503	60/60/15	Qualitative/Semiquantitative		Serum 10 µl	1:101	

## Giardia lamblia P

Product	Cat. No.	Incubation (min.)	Testprinciple (Qual/Quan.)	Standard Range	Sample Volume	Sample Dilution	Specials
<b>Giardia lamblia Ag (stool) ELISA 2. Generation</b>	EIA-3477	30/10	Qualitative		Stool 0.1 g	1:4	

# Infectious Diseases ELISAS

## Hanta Virus

V

Product	Cat. No.	Incubation (min.)	Testprinciple (Qualitative/Quantitative)	Standard Range	Sample Volume	Sample Dilution	Specials
<b>Hantavirus (Hantaan) IgG/IgM ELISA</b>	EIA-5237	45/45/10	Qualitative	Qualitative	Serum 10 µl	1:201	
<b>Hantavirus (Puumala) IgG/IgM ELISA</b>	EIA-5238	45/45/10	Qualitative	Qualitative	Serum 10 µl	1:201	
<b>Hantavirus (Dobrava) IgG/IgM ELISA</b>	EIA-5239	45/45/10	Qualitative	Qualitative	Serum 10 µl	1:201	

## Haemophilus influenzae

B

Product	Cat. No.	Incubation (min.)	Testprinciple (Qual/Quant.)	Standard Range	Sample Volume	Sample Dilution	Specials
<b>Haemophilus influenzae IgG ELISA</b>	EIA-2530	60/60/30	Qualitative	0.05-6.6 µg/ml	20 µL	1:26	

## Helicobacter pylori

B

Product	Cat. No.	Incubation (min.)	Testprinciple (Qual/Quant.)	Standard Range	Sample Volume	Sample Dilution	Specials
<b>Helicobacter pylori IgA ELISA</b>	EIA-3483	60/30/15	Qualitative/Quantitative	0-150 DU/ml	Serum 10 µl	1:101	
<b>Helicobacter pylori IgG ELISA</b>	EIA-3484	60/30/15	Qualitative/Quantitative	0-150 DU/ml	Serum 10 µl	1:101	
<b>Helicobacter pylori IgM ELISA</b>	EIA-2111	30/30/20	Qualitative		Serum 5 µl	1:40	
<b>Helicobacter pylori Ag (stool) ELISA</b>	EIA-4354	120/20	Qualitative/Quantitative	0-1 µg/ml	Stool 100 µl/100 mg		Please have a look at the user's manual
<b>CagA IgG ELISA</b>	EIA-4138	60/30/15	Quantitative	0-240 DU/ml	Serum/Plasma 10 µl	1:300	

## Hepatitis

V

Hepatitis is inflammation of the liver. Several different viruses cause viral hepatitis. They are named the hepatitis A, B, C, D, and E viruses. All of these viruses cause acute, or short-term, viral hepatitis. The hepatitis B, C, and D viruses can also cause chronic hepatitis, in which the infection is prolonged, sometimes lifelong.

### Viral Hepatitis

**Hepatitis A:** is a liver disease caused by the hepatitis A virus (HAV). Hepatitis A can affect anyone. Hepatitis A can occur in situations ranging from isolated cases of disease to widespread epidemics. It is spread primarily through food or water contaminated by feces from an infected person. Rarely, it spreads through contact with infected blood.

**Hepatitis B:** is a serious disease caused by a virus that attacks the liver. The virus, which is called hepatitis B virus (HBV), can cause lifelong infection, cirrhosis (scarring) of the liver, liver cancer, liver failure, and death.

**Hepatitis C:** is a liver disease caused by the hepatitis C virus (HCV), which is found in the blood of persons who have the disease. HCV is spread by contact with the blood of an infected person.

**Hepatitis D:** is a liver disease caused by the hepatitis D virus (HDV), a defective virus that needs the hepatitis B virus to exist. Hepatitis D virus (HDV) is found in the blood of persons infected with the virus.

HAV Ab	HBs Ab	HDV Ag	<b>Please ask for the complete panel</b>
HAV IgM	HBs Ag	HDV IgM	
HBc Ab	HCV Ab	HEV Ab/IgG/IgM	
Hbc IgM	HCV IgM	HGV Ab	
Hbe Ab/Ag	HDV Ab		

## Herpes Simplex Virus (HSV)

V

Product	Cat. No.	Incubation (min.)	Testprinciple (Qualitative/Quantitative)	Standard Range	Sample Volume	Sample Dilution	Specials
<b>HSV-1 IgG ELISA</b>	EIA-3485	60/30/15	Qualitative/Semiquantitative		Serum 10 µl	1:101	
<b>HSV-1 IgM ELISA</b>	EIA-3486	60/30/15	Qualitative/Semiquantitative		Serum 10 µl	1:101	
<b>HSV-2 IgG ELISA</b>	EIA-3487	60/30/15	Qualitative/Semiquantitative		Serum 10 µl	1:101	
<b>HSV-2 IgM ELISA</b>	EIA-3488	60/30/15	Qualitative/Semiquantitative		Serum 10 µl	1:101	
<b>HSV-1+2 IgG ELISA</b>	EIA-3489	60/30/15	Qualitative/Semiquantitative		Serum 10 µl	1:101	
<b>HSV-1+2 IgM ELISA</b>	EIA-3490	60/30/15	Qualitative/Semiquantitative		Serum 10 µl	1:101	

## Human Papilloma Virus

V

Product	Cat. No.	Incubation (min.)	Testprinciple (Qualitative/Quantitative)	Standard Range	Sample Volume	Sample Dilution	Specials
<b>Human Papilloma Virus IgG ELISA</b>	EIA-4907	60/60/20	Qualitative		Serum 10 µl	1:100	

## Influenza A and B

V

Product	Cat. No.	Incubation (min.)	Testprinciple (Qualitative/Quantitative)	Standard Range	Sample Volume	Sample Dilution	Specials
<b>Influenza A IgA ELISA</b>	EIA-4242	60/30/15	Qualitative/Semiquantitative		Serum 10 µl	1:101	
<b>Influenza A IgG ELISA</b>	EIA-4238	60/30/15	Qualitative/Semiquantitative		Serum 10 µl	1:101	
<b>Influenza A IgM ELISA</b>	EIA-4240	60/30/15	Qualitative/Semiquantitative		Serum 10 µl	1:101	
<b>Influenza B IgA ELISA</b>	EIA-4239	60/30/15	Qualitative/Semiquantitative		Serum 10 µl	1:101	
<b>Influenza B IgG ELISA</b>	EIA-4241	60/30/15	Qualitative/Semiquantitative		Serum 10 µl	1:101	
<b>Influenza B IgM ELISA</b>	EIA-4237	60/30/15	Qualitative/Semiquantitative		Serum 10 µl	1:101	



# Infectious Diseases ELISAS

## Legionella pneumophila (Legionnaire's Disease) B

Product	Cat. No.	Incubation (min.)	Testprinciple (Qualitative/Quantitative)	Standard Range	Sample Volume	Sample Dilution	Specials
<b>Legionella IgG/IgA/IgM ELISA</b>	EIA-2814	25/25/10-15	Qualitative		Serum 10 µl	1:21	
<b>Legionella Urinary Antigen ELISA</b>	EIA-4205	30/10/5	Qualitative		Urine 100 µl		

## Leishmania P

Product	Cat. No.	Incubation (min.)	Testprinciple (Qual/Quant.)	Standard Range	Sample Volume	Sample Dilution	Specials
<b>Leishmania IgG ELISA</b>	EIA-3492	10/10/5	Qualitative		Serum 10 µl	1:40	

## Leptospira B

Product	Cat. No.	Incubation (min.)	Testprinciple (Qual./Quant.)	Standard Range	Sample Volume	Sample Dilution	Specials
<b>Leptospira IgG ELISA</b>	EIA-4245	10/10/5	Qualitative		Serum/Plasma 10 µl	1:40	
<b>Leptospira IgM ELISA</b>	EIA-4715	10/10/5	Qualitative		Serum/Plasma 10 µl	1:40	
<b>Leptospira IgG/IgM</b>	EIA-4727	10/5/5	Qualitative		Serum/Plasma 10 µl	1:40	

## Measles Virus V

Product	Cat. No.	Incubation (min.)	Testprinciple (Qual./Quant.)	Standard Range	Sample Volume	Sample Dilution	Specials
<b>Measles Virus IgG ELISA</b>	EIA-3495	60/30/15	Qualitative/Semiquantitative		Serum 10 µl	1:101	
<b>Measles Virus IgM ELISA</b>	EIA-3496	60/30/15	Qualitative/Semiquantitative		Serum 10 µl	1:101	

## Malaria P

Product	Cat. No.	Incubation (min.)	Testprinciple (Qualitative/Quantitative)	Standard Range	Sample Volume	Sample Dilution	Specials
<b>Malaria ELISA</b>	EIA-4263	30/30/30	Qualitative/Semiquantitative		Serum/Plasma 50 µl		
<b>Malaria Ab ELISA</b>	EIA-5048	60/30/30	Qualitative		Serum/Plasma 150 µl		

## MumpsVirus V

Product	Cat. No.	Incubation (min.)	Testprinciple (Qualitative/Quantitative)	Standard Range	Sample Volume	Sample Dilution	Specials
<b>MumpsVirus IgG ELISA</b>	EIA-3497	60/30/15	Qualitative		Serum 10 µl	1:101	
<b>MumpsVirus IgM ELISA</b>	EIA-3498	60/30/15	Qualitative		Serum 10 µl	1:101	

## Mycobacterium tuberculosis B

Product	Cat. No.	Incubation (min.)	Testprinciple (Qualitative/Quantitative)	Standard Range	Sample Volume	Sample Dilution	Specials
<b>Tuberculosis IgA ELISA</b>	EIA-4250	60/30/20	Qualitative/Quantitative	1-100 U/ml	Serum/Plasma 10 µl	1:101	
<b>Tuberculosis IgG ELISA</b>	EIA-4252	60/30/20	Qualitative/Quantitative	1-150 U/ml	Serum/Plasma 10 µl	1:101	
<b>Tuberculosis IgM ELISA</b>	EIA-4251	60/30/20	Qualitative/Quantitative	1-100 U/ml	Serum/Plasma 10 µl	1:101	
<b>Tuberculosis IgG sensitive ELISA</b>	EIA-4508	60/30/20	Qualitative		Serum 5 µl	1:101	

## Mycoplasma hominis B

Product	Cat. No.	Incubation (min.)	Testprinciple (Qualitative/Quantitative)	Standard Range	Sample Volume	Sample Dilution	Specials
<b>Mycoplasma hominis IgA ELISA</b>	EIA-5097	60/30/15	Qualitative/Semiquantitative		Serum 10 µl	1:101	
<b>Mycoplasma hominis IgG ELISA</b>	EIA-4559	60/30/15	Qualitative/Semiquantitative		Serum/Plasma 10 µl	1:101	
<b>Mycoplasma hominis IgM ELISA</b>	EIA-4560	60/30/15	Qualitative/Semiquantitative		Serum/Plasma 10 µl	1:101	

## Mycoplasma pneumoniae B

Product	Cat. No.	Incubation (min.)	Testprinciple (Qualitative/Quantitative)	Standard Range	Sample Volume	Sample Dilution	Specials
<b>Mycoplasma pneumoniae IgA ELISA</b>	EIA-3848	60/30/15	Qualitative/Semiquantitative		Serum 10 µl	1:101	
<b>Mycoplasma pneumoniae IgG ELISA</b>	EIA-3499	60/30/15	Qualitative/Semiquantitative		Serum 10 µl	1:101	
<b>Mycoplasma pneumoniae IgM ELISA</b>	EIA-3500	60/30/15	Qualitative/Semiquantitative		Serum 10 µl	1:101	

## Norovirus V

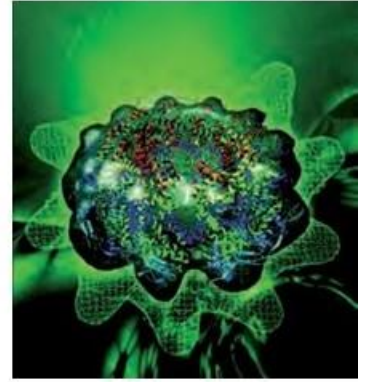
Product	Cat. No.	Incubation (min.)	Testprinciple (Qualitative/Quantitative)	Standard Range	Sample Volume	Sample Dilution	Specials
<b>Norovirus (stool) ELISA</b>	EIA-4864	60/30/15	Qualitative		100 µl/50-100mg	1:100	

# Infectious Diseases ELISAS

## Parainfluenza 1/2/3

V

Product	Cat. No.	Incubation (min.)	Testprinciple (Qualitative/Quantitative)	Standard Range	Sample Volume	Sample Dilution	Specials
<b>Parainfluenza 1/2/3 IgA ELISA</b>	EIA-4351	60/30/20	Qualitative/Quantitative	1-100 U/ml	Serum/Plasma 10 µl	1:101	
<b>Parainfluenza 1/2/3 IgG ELISA</b>	EIA-4349	60/30/20	Qualitative/Quantitative	1-125 U/ml	Serum/Plasma 10 µl	1:101	
<b>Parainfluenza 1/2/3 IgM ELISA</b>	EIA-4350	60/30/20	Qualitative/Quantitative	1-200 U/ml	Serum/Plasma 10 µl	1:101	



## Parvovirus B19

V

Product	Cat. No.	Incubation (min.)	Testprinciple (Qualitative/Quantitative)	Standard Range	Sample Volume	Sample Dilution	Specials
<b>Parvovirus B19 IgG ELISA</b>	EIA-3503	60/30/15	Qualitative/Semiquantitative		Serum 10 µl	1:101	
<b>Parvovirus B19 IgM ELISA</b>	EIA-3504	60/30/15	Qualitative/Semiquantitative		Serum 10 µl	1:101	

## Respiratory Syncytial Virus (RSV)

V

Product	Cat. No.	Incubation (min.)	Testprinciple (Qual./Quan.)	Standard Range	Sample Volume	Sample Dilution	Specials
<b>RSV IgA ELISA</b>	EIA-3506	60/30/15	Qualitative/Semiquantitative		Serum 10 µl	1:101	
<b>RSV IgG ELISA</b>	EIA-3507	60/30/15	Qualitative/Semiquantitative		Serum 10 µl	1:101	
<b>RSV IgM ELISA</b>	EIA-3508	60/30/15	Qualitative/Semiquantitative		Serum 10 µl	1:101	

## Rickettsia conorii

B

Product	Cat. No.	Incubation (min.)	Testprinciple (Qual./Quan.)	Standard Range	Sample Volume	Sample Dilution	Specials
<b>Rickettsia conorii IgM ELISA</b>	EIA-4613	60/30/10	Qualitative		Serum 10 µl	1:100	
<b>Rickettsia IgG ELISA</b>	EIA-5297	60/30/10	Qualitative		Serum 10 µl	1:100	

## Rotavirus

V

Product	Cat. No.	Incubation (min.)	Testprinciple (Qual./Quan.)	Standard Range	Sample Volume	Sample Dilution	Specials
<b>Rotavirus Ag (stool) ELISA</b>	EIA-3509	30/5/5/5	Qualitative		Stool 100 µl/1 g	1:5	

## Rubella

V

Product	Cat. No.	Incubation (min.)	Testprinciple (Qual./Quan.)	Standard Range	Sample Volume	Sample Dilution	Specials
<b>Rubella IgG ELISA</b>	EIA-3857	60/30/15	Quantitative	0-100 IU/ml	Serum 10 µl	1:101	
<b>Rubella IgM µ-capture ELISA</b>	EIA-3858	60/30/15	Qualitative		Serum 10 µl	1:101	
<b>Rubella IgG ELISA</b>	EIA-3510	60/30/15	Quantitative	10-100 IU/ml	Serum 10 µl	1:101	
<b>Rubella IgM ELISA</b>	EIA-3511	60/30/15	Quantitative	75-300 DU/ml	Serum 10 µl	1:101	

## Schistosoma mansoni (bilharziosis)

P

Product	Cat. No.	Incubation (min.)	Testprinciple (Qualitative/Quantitative)	Standard Range	Sample Volume	Sample Dilution	Specials
<b>Schistosoma mansoni IgG ELISA</b>	EIA-3872	60/30/15	Qualitative		Serum 10 µl	1:101	

## Strongyloides

P

Product	Cat. No.	Incubation (min.)	Testprinciple (Qualitative/Quantitative)	Standard Range	Sample Volume	Sample Dilution	Specials
<b>Strongyloides IgG ELISA</b>	EIA-4208	10/5/5	Qualitative		Serum 10 µl	1:64	

## Taenia solium

P

Product	Cat. No.	Incubation (min.)	Testprinciple (Qualitative/Quantitative)	Standard Range	Sample Volume	Sample Dilution	Specials
<b>Taenia solium IgG ELISA</b>	EIA-3513	10/5/5	Qualitative		Serum 10 µl	1:64	

## Tetanus (Clostridium tetani) toxin

B

Product	Cat. No.	Incubation (min.)	Testprinciple (Qualitative/Quantitative)	Standard Range	Sample Volume	Sample Dilution	Specials
<b>Tetanus toxin IgG ELISA</b>	EIA-3514	60/30/15	Quantitative	0.2-1 IU/ml	Serum 10 µl	1:100	

# Infectious Diseases ELISAS

## Tick-borne encephalitis (TBE) Virus V

Product	Cat. No.	Incubation (min.)	Testprinciple (Qualitative/Quantitative)	Standard Range	Sample Volume	Sample Dilution	Specials
<b>TBE IgG (FSME) ELISA</b>	EIA-3860	60/30/15	Quantitative	0-300 DU/ml	Serum/10 µl Citrat Plasma	1:101	
<b>TBE IgM (FSME) ELISA</b>	EIA-3861	60/30/15	Qualitative		Serum/10 µl Citrat Plasma	1:101	

## Toxocara canis P

Product	Cat. No.	Incubation (min.)	Testprinciple (Qualitative/Quantitative)	Standard Range	Sample Volume	Sample Dilution	Specials
<b>Toxocara canis IgG ELISA</b>	EIA-3518	10/5/5	Qualitative		Serum 10 µl	1:64	

## Toxoplasma gondii P

Product	Cat. No.	Incubation (min.)	Testprinciple (Qualitative/Quantitative)	Standard Range	Sample Volume	Sample Dilution	Specials
<b>Toxoplasma gondii IgA ELISA</b>	EIA-3683	60/30/15	Qualitative/ Semi-quantitative		Serum 10 µl	1:101	
<b>Toxoplasma gondii IgG ELISA</b>	EIA-3863	60/30/15	Quantitative	0-200 IU/ml	Serum/ Plasma 10 µl	1:101	
<b>Toxoplasma gondii IgG Avidity Test</b>	EIA-5066	60/5			Serum 10 µl	1:101	
To perform the test EIA-3863 is necessary.							
<b>Toxoplasma gondii IgG ELISA</b>	EIA-3519	60/30/15	Quantitative	50-200 IU/ml	Serum 10 µl	1:101	
<b>Toxoplasma gondii IgM µ-Capture ELISA</b>	EIA-3864	60/60/30	Qualitative		Serum 10 µl	1:101	
<b>Toxoplasma gondii IgM ELISA</b>	EIA-3520	60/30/15	Quantitative	25-100 DU/ml	Serum 10 µl	1:101	

## Treponema pallidum (Syphilis) B

Product	Cat. No.	Incubation (min.)	Testprinciple (Qualitative/Quantitative)	Standard Range	Sample Volume	Sample Dilution	Specials
<b>Treponema pallidum Screen ELISA</b>	EIA-4697	60/30/15	Qualitative		Serum/Plasma 100 µl		
<b>Treponema pallidum Screen ELISA</b>	EIA-5054	60/60/30	Qualitative		Serum/Plasma 20 µl		
<b>Treponema pallidum IgG ELISA</b>	EIA-3517	60/30/15	Qualitative/ Semi-quantitative		Serum 10 µl	1:101	
<b>Treponema pallidum IgM ELISA</b>	EIA-4267	60/30/15	Qualitative/ Semi-quantitative		Serum 10 µl	1:101	

## Trichinella spiralis P

Product	Cat. No.	Incubation (min.)	Testprinciple (Qualitative/Quantitative)	Standard Range	Sample Volume	Sample Dilution	Specials
<b>Trichinella spiralis IgG ELISA</b>	EIA-3521	10/5/5	Qualitative		Serum 10 µl	1:64	



## Trypanosoma cruzi (Chagas Disease) P

Product	Cat. No.	Incubation (min.)	Testprinciple (Qualitative/Quantitative)	Standard Range	Sample Volume	Sample Dilution	Specials
<b>Trypanosoma cruzi IgG ELISA</b>	EIA-3464	10/5/5	Qualitative		Serum 10 µl	1:64	

## Tuberculosis see Mycobacterium tuberculosis

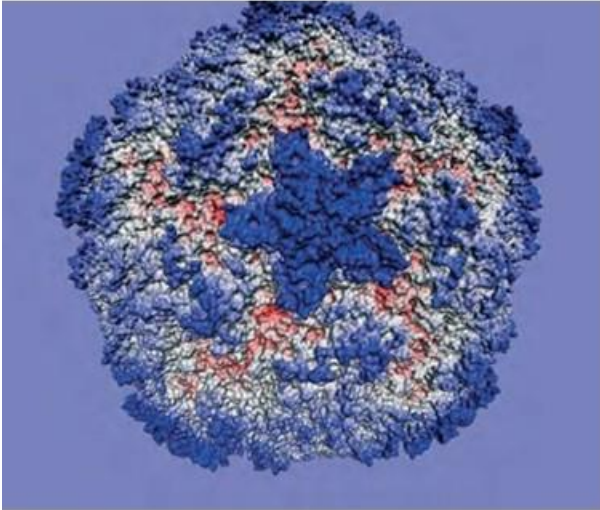
## Ureaplasma urealyticum B

Product	Cat. No.	Incubation (min.)	Testprinciple (Qualitative/Quantitative)	Standard Range	Sample Volume	Sample Dilution	Specials
<b>Ureaplasma urealyticum IgA ELISA</b>	EIA-5098	60/30/15	Qualitative/ Semi-quantitative		Serum/Plasma 10 µl	1:101	
<b>Ureaplasma urealyticum IgG ELISA</b>	EIA-4562	60/30/15	Qualitative/ Semi-quantitative		Serum/Plasma 10 µl	1:101	
<b>Ureaplasma urealyticum IgM ELISA</b>	EIA-4561	60/30/15	Qualitative/ Semi-quantitative		Serum/Plasma 10 µl	1:101	

## Varicella Zoster Virus V

Product	Cat. No.	Incubation (min.)	Testprinciple (Qualitative/Quantitative)	Standard Range	Sample Volume	Sample Dilution	Specials
<b>Varicella zoster Virus (VZV) IgA ELISA</b>	EIA-3522	60/30/15	Qualitative/ Semi-quantitative		Serum 10 µl	1:101	
<b>Varicella zoster Virus (VZV) IgG ELISA</b>	EIA-3523	60/30/15	Qualitative/ Semi-quantitative		Serum 10 µl	1:101	
<b>Varicella zoster Virus (VZV) IgM ELISA</b>	EIA-3524	60/30/15	Qualitative/ Semi-quantitative		Serum 10 µl	1:101	

# Infectious Diseases ELISAS



## Yersinia Enterolitica B

Product	Cat. No.	Incubation (min.)	Testprinciple (Qualitative/Quantitative)	Standard Range	Sample Volume	Sample Dilution	Specials
Yersinia enterolitica IgA ELISA	EIA-2566	60/30/20	Quantitative	0.1-100 U/ml	Serum/Plasma 10 µl	I:101	
Yersinia enterolitica IgG ELISA	EIA-2567	60/30/20	Quantitative	0.1-100 U/ml	Serum/Plasma 10 µl	I:101	
Yersinia enterolitica IgM ELISA	EIA-2568	60/30/20	Quantitative	0.1-100 U/ml	Serum/Plasma 10 µl	I:101	

## West Nile Virus V

Product	Cat. No.	Incubation (min.)	Testprinciple (Qual./Quan.)	Standard Range	Sample Volume	Sample Dilution	Specials
West Nile Virus IgG ELISA	EIA-4400	5/60/30/10	Qualitative		Serum 10 µl	I:101	
West Nile Virus IgM ELISA	EIA-4419	60/120/30/10	Qualitative		Serum 10 µl	I:101	

# DRG ELISAS

### Tumormarker

TM-CYFRA 21-1  
 TM-CA 72-4  
 TM-CA 15-3  
 TM-CA 125  
 TM-CA 19-9  
 CEA

### Gyn. Endocrinology

Estradiol  
 Progesterone  
 17a-OH Progesterone  
 DHEA-S  
 Testosterone  
 DHEA  
 Estrone  
 Androstendione  
 DHT  
 SHBG

### Prenatal Supervision

PAPP-A  
 AFP  
 Free Estriol  
 HCG  
 HPL  
 PLGF

### Saliva Diagnostics

Cortisol  
 Estradiol  
 Testosterone  
 DHEA  
 Progesterone  
 17a-OH Progesterone  
 Lactate

### Diabetes/Obesity

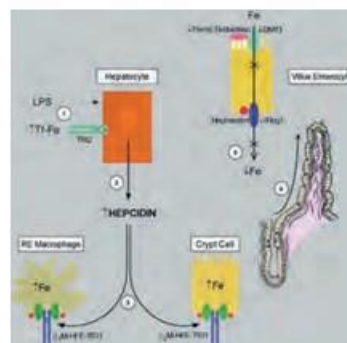
Insulin  
 C-Peptid  
 Proinsulin  
 Leptin

### Iron Metabolism

Hepcidin  
 Pro-Hepcidin

### New ELISAS

25-OH Vitamin D  
 Renin  
 Aldosterone  
 ER-60  
 CYR-61  
 CTGF



# Infectious Diseases ELISAS



Local Distributor

